



01 Galvanized Pipe



11 Galvanized Pipe Fittings



13 Carbon Steel Pipe Fittings



16 Flange



36 Cast Iron Pipe Fittings



47 Joint



56 Multi-Function Pipe Repair & Coupling



68 Groove Pipe Fitting



85 Fire Control Series

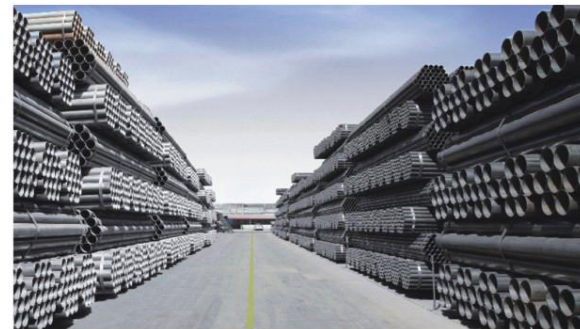


ERW Steel Pipe Production Line

ERW Steel Pipe

Size: DN15–200mm

Usage: Widely used in low pressure liquid delivery such as water, gas, air, oil and steam and for machine structural purposes.



ERW Steel Pipe Yard



ERW Steel Pipe Production Line

Hot dipped galvanized steel pipe

Square / Rectangular steel pipe

Galvanized Pipe



Hot Dipped Galvanized Steel Pipe

Hot Dipped Galvanized Square Pipe

Square Tube Production Line

Hot Dipped Galvanized Steel Pipe

Round Pipe: DN15–200mm
 Square Pipe: 20 x 20–200 x 200mm
 Rectangular Pipe: 20 x 40–100 x 200mm
 Spiral Pipe: 219–1420mm
 Flat Steel / Angle Steel / Channel Steel and L-steel.
 Usage: Used for delivery of low pressure liquid such as water, gas, air, steam for heating and for machine structural purposes

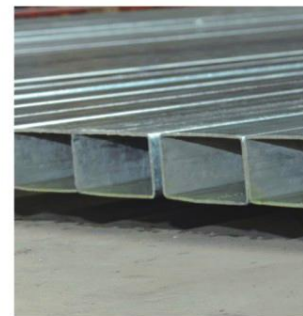
Square / Rectangular Steel Pipe

Square Steel Pipe: 20 x 20–400 x 400mm
 Rectangular Pipe: 20 x 40–300 x 500mm
 WT: 1.5–12mm
 Usage: The Products are widely used in steel structure, mechanical, manufacturing, construction, automobile manufacturing, shipbuilding, electricity and so on.



Hot Dipped Galvanized Steel Pipe

Hot Dipped Galvanized Steel Pipe



Rectangular Tube

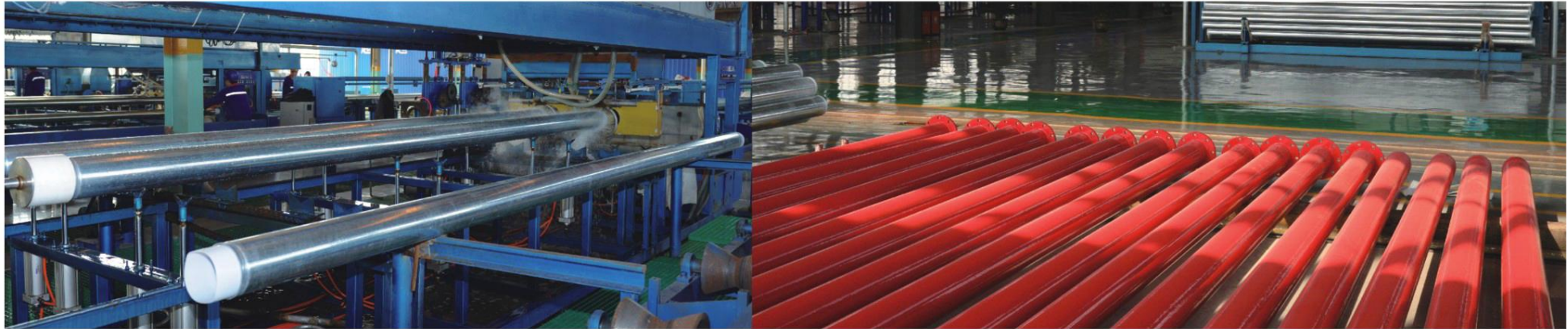
Rectangular Tube Yard

Square Tube

Steel pipe of lining plastic

Plastic-Coated Steel Pipe

Galvanized Pipe



Steel Pipe of Lining Plastic Production Line

Plastic Coated Composite Pipe Production Workshop

Steel Pipe of Lining Plastic

Size: DN15-300mm round pipe
 Usage: High-level drinking water convey

Plastic-Coated Steel Pipe

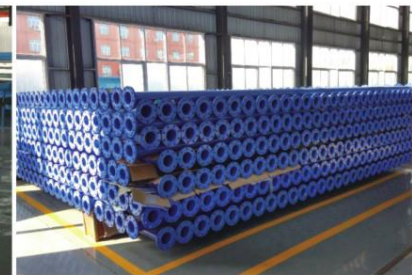
Size: DN15-DN500
 Usage: Water supply, fire protection, wire and cable pipe, vent pipe



Steel Pipe of Lining Plastic for Cold Water



Steel Pipe of Lining Plastic for Hot Water



Plastic Coated Composite Pipe Production Workshop

SSAW steel pipe



Spiral Steel Pipe Production Line

SSAW Steel Pipe

Specification: $\Phi 219-2020\text{mm}$. Max wall thickness: 20mm

Usage: Used for the line pipe of petroleum, gas and delivery of low pressure liquid such as water, gas, air, steam for heating, and for piles and the construction field for structure.



3PE Spiral Steel Pipe



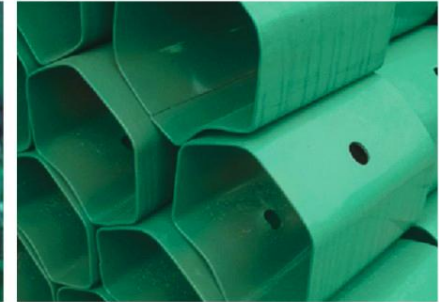
Spiral Steel Pipe Yard

Galvanized Pipe

Highway Materials



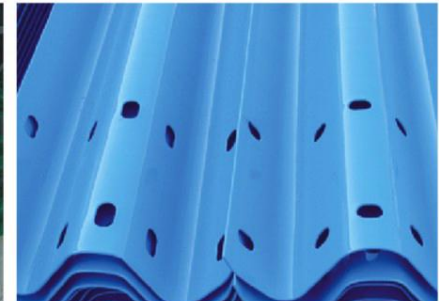
Spray Lines



Discourage Block Column Cap



Spray Plate



Spray Wave Beam Steel Guardrail

Highway Materials

wave beam steel guardrail steel column
discourage block column cap ends



Wave Beam Steel Guardrail



Square Steel Columns



Round Steel Columns



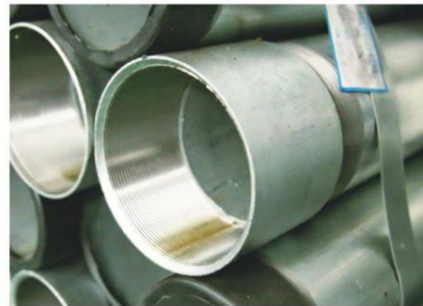
Grooved with caps



Cut In Short Length



PVC Wrapped



Threaded with Coupling



Oiled and PVC Wrapped



Painted

BS EN 10255 Steel Tubes and Tubular Suitable for Screwing to BS EN 10226 Pipe Threads

Series	Nominal Size	Outside Diameter						Wall Thickness		Mass of Black Tube					
		Max		Min				Plain End			Screwed and Socketed				
		Inch	DN	in	mm	in	mm	in	mm	lb/ft	kg/ft	kg/m	lb/ft	kg/ft	kg/m
L	1/2	15	0.854	21.7	0.827	21.0	0.091	2.3	0.726	0.329	1.08	0.732	0.332	1.09	
	3/4	20	1.067	27.1	1.039	26.4	0.091	2.3	0.941	0.427	1.4	0.947	0.430	1.41	
	1	25	1.339	34.0	1.307	33.2	0.114	2.9	1.478	0.671	2.2	1.492	0.677	2.22	
	1 1/4	32	1.681	42.7	1.650	41.9	0.114	2.9	1.895	0.860	2.82	1.915	0.869	2.85	
	1 1/2	40	1.913	48.6	1.882	47.8	0.114	2.9	2.184	0.991	3.25	2.211	1.003	3.29	
	2	50	2.390	60.7	2.346	59.6	0.126	3.2	3.031	1.375	4.51	3.078	1.396	4.58	
	2 1/2	65	2.992	76.0	2.961	75.2	0.126	3.2	3.864	1.753	5.75	3.944	1.789	5.87	
	3	80	3.492	88.7	3.461	87.9	0.126	3.2	4.543	2.060	6.76	4.657	2.112	6.93	
	3 1/2	90	3.984	101.2	3.949	100.3	0.142	3.6	5.846	2.652	8.7	5.967	2.707	8.88	
	4	100	4.484	113.9	4.449	113.0	0.142	3.6	6.605	2.996	9.83	6.787	3.078	10.1	
	5	125	5.543	140.8	5.453	138.5	0.117	4.5	10.080	4.572	15	10.416	4.724	15.5	
	6	150	6.555	166.5	6.453	163.9	0.117	4.5	11.961	5.425	17.8	12.364	5.608	18.4	
L1	1/2	15	0.854	21.7	0.827	21.0	0.091	2.3	0.726	0.329	1.08	0.732	0.332	1.09	
	3/4	20	1.067	27.1	1.039	26.4	0.091	2.3	0.934	0.424	1.39	0.941	0.427	1.4	
	1	25	1.339	34.0	1.307	33.2	0.114	2.9	1.478	0.671	2.2	1.492	0.677	2.22	
	1 1/4	32	1.681	42.7	1.650	41.9	0.114	2.9	1.895	0.860	2.82	1.915	0.869	2.85	
	1 1/2	40	1.913	48.6	1.882	47.8	0.114	2.9	2.177	0.988	3.24	2.204	1.000	3.28	
	2	50	2.390	60.7	2.346	59.6	0.126	3.2	3.017	1.369	4.49	3.064	1.390	4.56	
	2 1/2	65	3.004	76.3	2.961	75.2	0.126	3.2	3.850	1.747	5.73	3.931	1.783	5.85	
	3	80	3.520	89.4	3.461	87.9	0.142	3.6	5.073	2.301	7.55	5.188	2.353	7.72	
	4	100	4.524	114.9	4.449	113.0	0.157	4.0	7.257	3.292	10.8	7.459	3.383	11.1	
	1/2	15	0.843	21.4	0.827	21.0	0.079	2.0	0.636	0.289	0.947	0.642	0.291	0.956	
	3/4	20	1.059	26.9	1.039	26.4	0.091	2.3	0.927	0.421	1.38	0.934	0.424	1.39	
	1	25	1.331	33.8	1.307	33.2	0.102	2.6	1.331	0.604	1.98	1.344	0.610	2	
1 1/4	32	1.673	42.5	1.650	41.9	0.102	2.6	1.707	0.774	2.54	1.727	0.783	2.57		
1 1/2	40	1.906	48.4	1.882	47.8	0.114	2.9	2.170	0.985	3.23	2.197	0.997	3.27		
2	50	2.370	60.2	2.346	59.6	0.114	2.9	2.742	1.244	4.08	2.789	1.265	4.15		
2 1/2	65	2.992	76.0	2.961	75.2	0.126	3.2	3.837	1.740	5.71	3.918	1.777	5.83		
3	80	3.492	88.7	3.461	87.9	0.126	3.2	4.516	2.048	6.72	4.630	2.100	6.89		
4	100	4.484	113.9	4.449	113.0	0.142	3.6	6.552	2.972	9.75	6.720	3.048	10		
L2	1/2	15	0.858	21.8	0.827	21.0	0.126	3.2	0.968	0.439	1.44	0.974	0.442	1.45	
	3/4	20	1.075	27.3	1.043	26.5	0.126	3.2	1.257	0.570	1.87	1.263	0.573	1.88	
	1	25	1.346	34.2	1.311	33.3	0.157	4.0	1.969	0.893	2.93	1.982	0.899	2.95	
	1 1/4	32	1.689	42.9	1.654	42.0	0.157	4.0	2.547	1.155	3.79	2.567	1.164	3.82	
	1 1/2	40	1.921	48.8	1.886	47.9	0.157	4.0	2.937	1.332	4.37	2.963	1.344	4.41	
	2	50	2.394	60.8	2.350	59.7	0.177	4.5	4.159	1.887	6.19	4.207	1.908	6.26	
	2 1/2	65	3.016	76.6	2.965	75.3	0.177	4.5	5.329	2.417	7.93	5.409	2.454	8.05	
	3	80	3.524	89.5	3.465	88.0	0.197	5.0	6.921	3.139	10.3	7.056	3.200	10.5	
	4	100	4.528	115.0	4.453	113.1	0.213	5.4	9.744	4.420	14.5	9.945	4.511	14.8	
	5	125	5.543	140.8	5.453	138.5	0.213	5.4	12.028	5.456	17.9	12.364	5.608	18.4	
	6	150	6.555	166.5	6.453	163.9	0.213	5.4	14.313	6.492	21.3	14.716	6.675	21.9	
	H	1/2	15	0.858	21.8	0.827	21.0	0.102	2.6	0.813	0.369	1.21	0.820	0.372	1.22
3/4		20	1.075	27.3	1.043	26.5	0.102	2.6	1.048	0.475	1.56	1.055	0.479	1.57	
1		25	1.346	34.2	1.311	33.3	0.126	3.2	1.619	0.735	2.41	1.633	0.741	2.43	
1 1/4		32	1.689	42.9	1.654	42.0	0.126	3.2	2.083	0.945	3.1	2.103	0.954	3.13	
1 1/2		40	1.921	48.8	1.886	47.9	0.126	3.2	2.392	1.085	3.56	2.419	1.097	3.6	
2		50	2.394	60.8	2.350	59.7	0.142	3.6	3.380	1.533	5.03	3.427	1.554	5.1	
2 1/2		65	3.016	76.6	2.965	75.3	0.142	3.6	4.314	1.957	6.42	4.395	1.993	6.54	
3		80	3.524	89.5	3.465	88.0	0.157	4.0	5.618	2.548	8.36	5.732	2.600	8.53	
4		100	4.528	115.0	4.453	113.1	0.177	4.5	8.198	3.179	12.2	8.400	3.810	12.5	
5		125	5.543	140.8	5.453	138.5	0.197	5.0	11.155	5.060	16.6	11.491	5.212	17.1	
6		150	6.555	166.5	6.453	163.9	0.197	5.0	13.305	6.035	19.8	13.703	6.218	20.4	

BS 1387/85 Steel Tubes and Tubular Suitable for Screwing to BS 21 Pipe Threads

Series	Nominal Size		Outside Diameter				Wall Thickness		Mass of Black Tube					
			Max		Min				Plain End			Screwed and Socketed		
	Inch	DN	in	mm	in	mm	in	mm	lb/ft	kg/ft	kg/m	lb/ft	kg/ft	kg/m
Light	1/2	15	0.841	21.4	0.825	21.0	0.080	2.0	0.636	0.289	0.947	0.646	0.293	0.956
	3/4	20	1.059	26.9	1.041	26.4	0.090	2.3	0.927	0.421	1.38	0.954	0.433	1.39
	1	25	1.328	33.8	1.309	33.2	0.104	2.6	1.330	0.604	1.98	1.360	0.617	2
	1 1/4	32	1.670	42.5	1.650	41.9	0.104	2.6	1.710	0.774	2.54	1.750	0.794	2.57
	1 1/2	40	1.903	48.4	1.882	47.8	0.116	2.9	2.170	0.985	3.23	2.220	1.010	3.27
	2	50	2.370	60.2	2.347	59.6	0.116	2.9	2.740	1.240	4.08	2.810	1.270	4.15
	2 1/2	65	2.991	76.0	2.960	75.2	0.126	3.2	3.840	1.740	5.71	3.980	1.810	5.83
	3	80	3.491	88.7	3.460	87.9	0.126	3.2	4.520	2.050	6.72	4.490	2.130	6.89
	4	100	4.481	113.9	4.450	113.0	0.142	3.6	6.550	2.970	9.75	6.840	3.100	10
	1/2	15	0.586	21.7	0.831	21.1	0.104	2.6	0.813	0.369	1.21	0.828	0.376	1.22
3/4	20	1.072	27.2	1.047	26.6	0.104	2.6	1.050	0.475	1.56	1.070	0.485	1.57	
1	25	1.346	34.2	1.316	33.4	0.126	3.2	1.620	0.735	2.41	1.650	0.748	2.43	
1 1/4	32	1.687	42.9	1.657	42.1	0.126	3.2	2.080	0.945	3.1	2.130	0.966	3.13	
1 1/2	40	1.919	48.8	1.889	48.0	0.126	3.2	2.400	1.090	3.57	2.460	1.120	3.61	
2	50	2.394	60.8	2.354	59.8	0.142	3.6	3.380	1.530	5.03	3.470	1.570	5.1	
2 1/2	65	3.014	76.6	2.969	75.4	0.142	3.6	4.320	1.960	6.43	4.460	2.020	6.55	
3	80	3.524	89.5	3.469	88.1	0.157	4.0	5.620	2.550	8.37	5.800	2.630	8.54	
4	100	4.524	114.9	4.459	113.3	0.177	4.5	8.200	3.720	12.2	8.340	3.780	12.5	
5	125	5.534	140.6	5.459	138.7	0.196	5.0	11.15	5.060	16.6	11.20	5.080	17.1	
6	150	6.539	166.1	6.459	164.1	0.196	5.0	13.24	6.000	19.7	13.30	6.030	20.3	
1/2	15	0.856	21.7	0.831	21.1	0.126	3.2	0.968	0.439	1.44	0.983	0.446	1.45	
3/4	20	1.072	27.2	1.047	26.6	0.126	3.2	1.260	0.570	1.87	1.280	0.581	1.88	
1	25	1.346	34.2	1.316	33.4	0.157	4.0	1.980	0.896	2.94	2.010	0.912	2.96	
1 1/4	32	1.687	42.9	1.657	42.1	0.157	4.0	2.550	1.160	3.8	2.600	1.180	3.83	
1 1/2	40	1.919	48.8	1.889	48.0	0.157	4.0	2.940	1.340	4.38	3.010	1.370	4.42	
2	50	2.394	60.8	2.354	59.8	0.177	4.5	4.160	1.890	6.19	4.190	1.900	6.26	
2 1/2	65	3.014	76.6	2.969	75.4	0.177	4.5	5.330	2.420	7.93	5.390	2.440	8.05	
3	80	3.524	89.5	3.469	88.1	0.196	5.0	6.920	3.140	10.3	6.870	3.120	10.5	
4	100	4.524	114.9	4.459	113.3	0.212	5.4	9.740	4.420	14.5	9.910	4.500	14.8	
5	125	5.534	140.6	5.459	138.7	0.212	5.4	12.30	5.460	17.9	12.30	5.580	18.4	
6	150	6.539	166.1	6.459	164.1	0.212	5.4	14.31	6.490	21.3	14.70	6.670	21.9	



Galvanized Pipe Fittings

